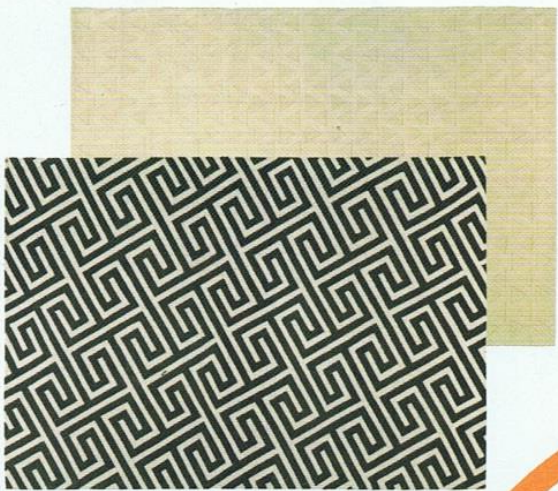




IN THE PICTURE

From looking through a camera lens to capturing nature at its most beautiful, Tania Johnson is known for translating her photos into intricate rugs but she has now released a limited edition of solid metal large scale prints. Metal London and Metal Flora have an attractive reflective shimmer and prices start from £389 for the 30x45cm size. taniajohnsondesign.com.



Soft side

Symmetrical motifs and a neutral colour palette define the designs of the latest hand-knotted Tibetan wool rugs by co-founder and designer of The Rug Company, Suzanne Sharp. Her inspiration has come from her travels and the details she's seen on various historical buildings. Triangles White and Key Slate are from £725 per sq. m. therugcompany.com.



A good night

The amount of sleep we get each night is precious, as we're always trying to fit so much into our daily lives. So, when you're updating your mattress make sure you put comfort and support at the top of your list. Think about what you might like and seek advice from Soak & Sleep – they have a range of mattresses to fit various personal requirements. From £158 for a single. soakandsleep.com.

SUMMER STYLE

When the sun's out and the birds are singing there's definitely more of an uplifting mood in the air, and why wouldn't you want to bring this feeling into your bedroom? The white parrot lamp with shade, £195, is one of our favourites as well as the Tindi quilt, £135, and Trinx multi pouffe, £195, all from the new collection at Graham & Green.

grahamandgreen.co.uk



STANDING TALL
THE WORLDS OF COLOUR BLOCKING AND GEOMETRY COLLIDE IN THE DESIGN OF THE NEW RITRATTI CABINET BY DAINELLI STUDIO. MADE FROM WOOD, THE IDEA FOR THE TWO DOORS WAS INSPIRED BY THE WINDOWS OF NOTRE DAME IN PARIS. IT'S £3,120. GOMODERN.CO.UK.

